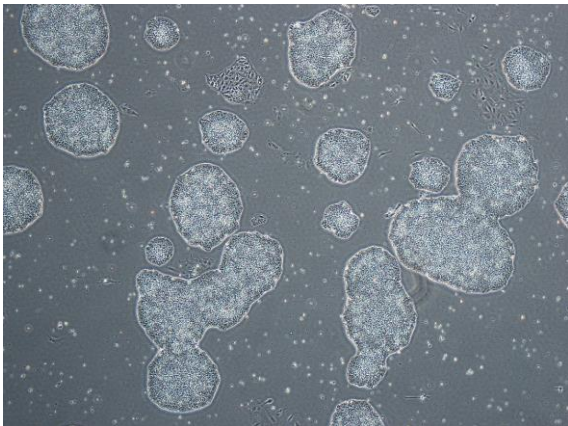
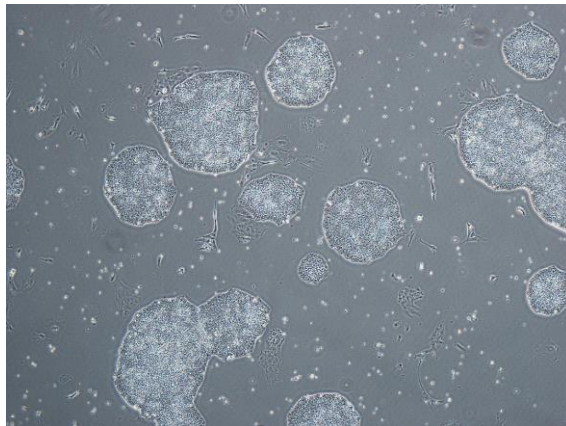


【 CiRA-j-1014 】 Morphology of iPSC colonies

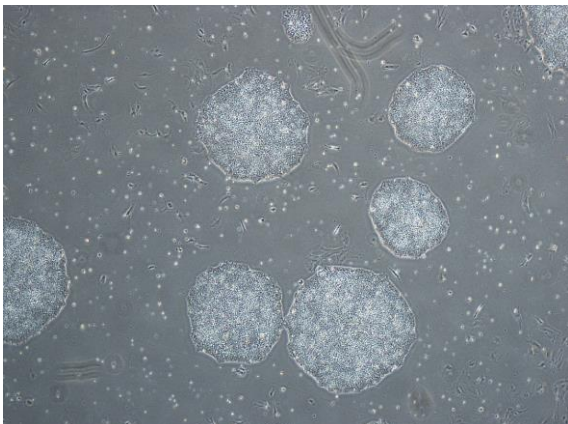
CiRA-j-1014-A: passage-2



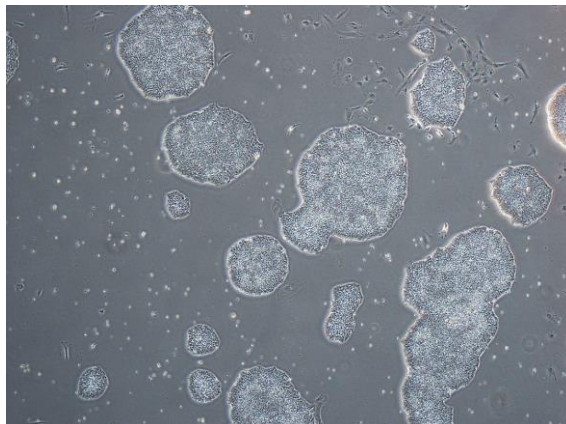
CiRA-j-1014-B: passage-2



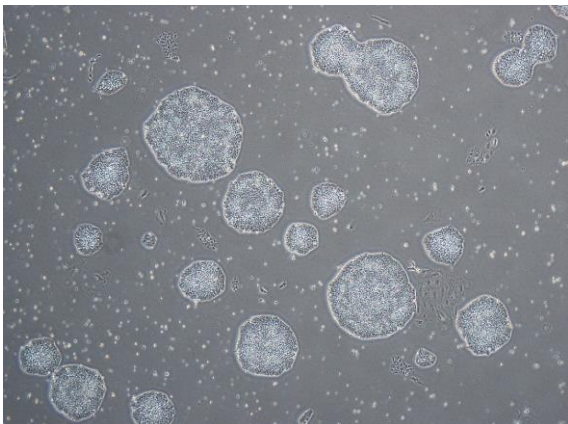
CiRA-j-1014-C: passage-2



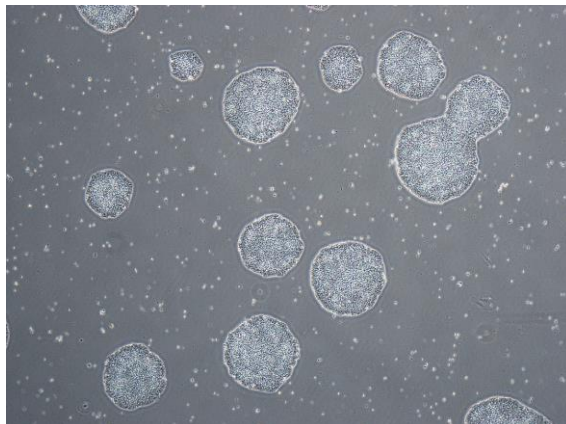
CiRA-j-1014-D: passage-2



CiRA-j-1014-E: passage-2



CiRA-j-1014-F: passage-2



(All images were captured at 4x magnification)